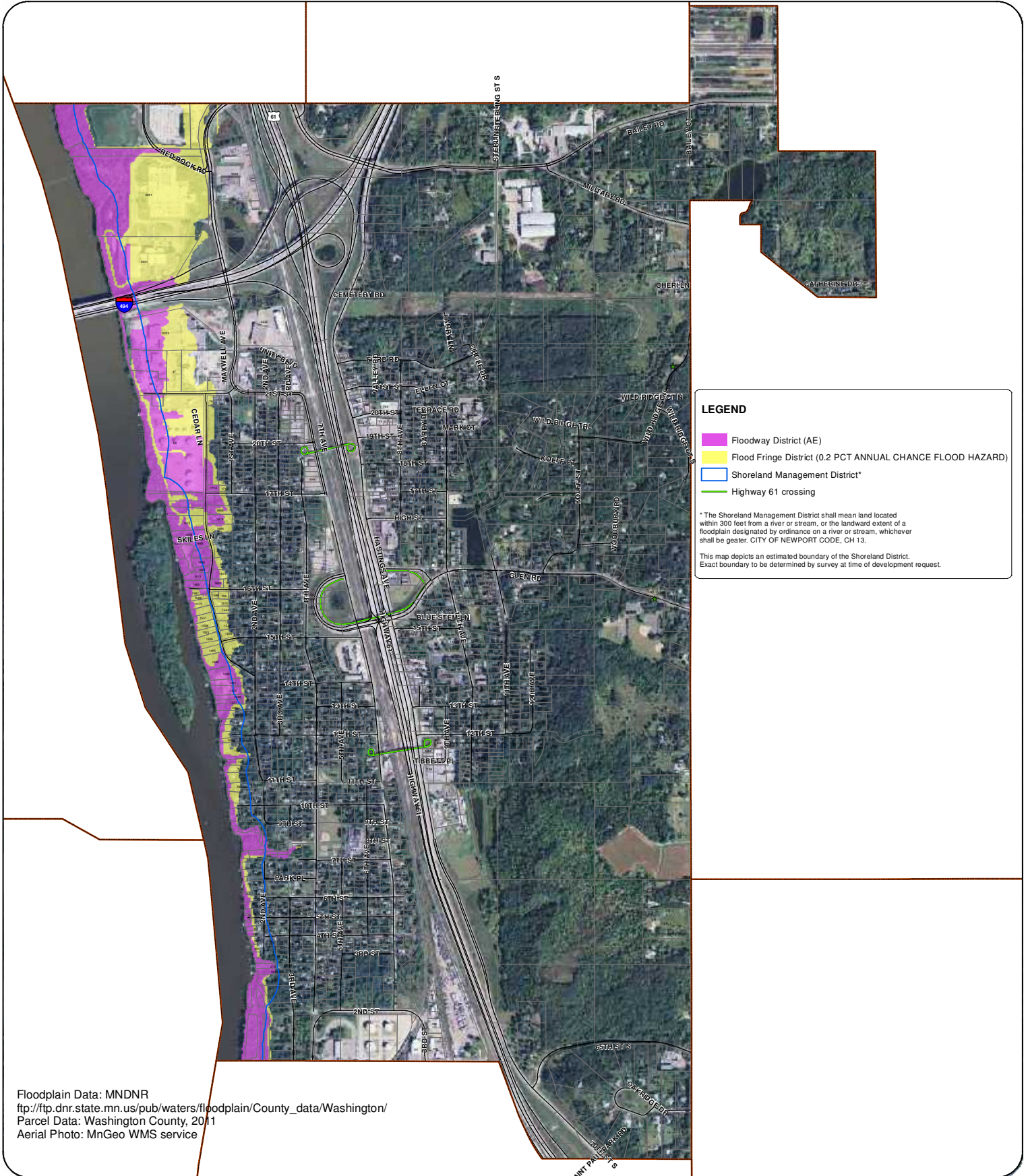




City of Newport Floodplain Districts



LEGEND

- Floodway District (AE)
- Flood Fringe District (0.2 PCT ANNUAL CHANGE FLOOD HAZARD)
- Shoreland Management District*
- Highway 61 crossing

*The Shoreland Management District shall mean land located within 300 feet from a river or stream, or the landward extent of a floodplain designated by ordinance on a river or stream, whichever shall be greater. CITY OF NEWPORT CODE, CH 13.

This map depicts an estimated boundary of the Shoreland District. Exact boundary to be determined by survey at time of development request.

Floodplain Data: MNDNR
ftp://ftp.dnr.state.mn.us/pub/waters/floodplain/County_data/Washington/
 Parcel Data: Washington County, 2011
 Aerial Photo: MnGeo WMS service

